


# CBF Seminar: Getting Started on Eco-stewardship in the local Church

**JENI:** Welcome everyone! We're glad you're here! I'm Jeni Cook Furr and this is my husband Ray Cook Furr. Normally, we teach the Crossroads Class -- and more of that class will likely be here shortly. They are in that time of life in which dressing and wrangling young children and dropping them off in Sunday School takes a lot more time and effort than I can even remember. It's all a blur to me now. But they are used to us starting later than we can for the next 4 weeks. So...please be patient as some may straggle in. We also want to welcome the Connections Class this morning, and all other individuals who have or will join us as we study God's call on our lives and the Scriptures and Christian Values that require a response on our part. Ray will take the lead in most of the next 3 more scientific lessons. So today, you'll hear more from me than usual.



**What one thing do you most want to talk about in this CBF workshop related to eco-stewardship in your church?**



**JENI:** About a year and a half ago, Woodland started an Oikonomos Ministry Team to consider the Christian's and the church's responsibility to care for Nature. Oikonomos is the Greek word for Stewardship. This morning we begin a 4 week series on this topic. We start today where most all Christian searches begin. At the beginning. What does the Bible say about human responsibility to care for this world? What values do the scriptures instruct us to operate from in living on this planet? And how well are we doing in responding to God's commandments about this?



## Presenters

- ▶ **Jeni Cook Furr** -Retired Chaplain, Woodland Member
- ▶ **Ray Cook Furr** -Retired Minister, Woodland Member
- ▶ **Garrett Vickrey** -Senior Pastor
- ▶ **Mike Massar** -Associate Pastor

Woodland Baptist Church  
San Antonio, TX

JENI: Ok. So to begin with, let's establish 2 things. First, God created and pronounced this World to Be GOOD. When finished creating, God said, "Very Good!" And as we'll see later, God LOVES this world.

Second, We need to acknowledge our self-interest when reading the Bible. It's not a bad thing. Our course we want to know what God wants from us, individually. But we tend to pass over too quickly what doesn't seem directly related to our current lives. In the OT, when God speaks to an agricultural community half-way around the world, centuries ago...that doesn't mean there isn't a message in there for us too. If God still means for us to live by the 10 commandments, then God's other commandments in the OT are important for us today also. If God speaks of caring for animals and trees then & there...can we afford to ignore those commandments today?

## How Oikonomos became a thing



**JENI:** Linguists have demonstrated that the way we speak impacts the way we think, and thus, also our actions. How many of you went to Bible School as a child? Well, if you did, you probably sang the same song every year, and every day of Bible School. “This is My Father’s World.” As children, we learned and knew that this world belonged to God. But somehow as we grew, we started thinking, saying, and acting as if this were OUR world. It’s a subtle difference, I know. And we probably did it with reverence to God: We might say, “Didn’t God GIVE US a wonderful, gorgeous world?” But God never transferred ownership to us at all. It is still God’s world. It will always be God’s world, and we are here to take care of it.

## City-wide recognition

- ▶ In June 2022, Woodland became the first church in San Antonio to be certified by the San Antonio Office of Sustainability.



**JENI:** So now, let's start in Genesis. Chapter 1:26

READ

In all of our human diversity, we are ALL created in the image of God.



## Theological Imperative

- ▶ Ask the Beast by Elizabeth Johnson
  - ▶ Job 12: 7-10
- ▶ We are called to be more than stewards
- ▶ Advocacy might be a better image
- ▶ Steps of Advocacy
  1. Listen to creation
  2. Ask the beast



## Basic Definitions

- ▶ **Sustainability** : Everything that we need for our survival and well-being depends, either directly or indirectly, on our natural environment. To pursue sustainability is to create and maintain the conditions under which humans and nature can exist in productive harmony to support present and future generations.
- ▶ **Carbon Footprint**: primarily relates to the amount of carbon dioxide, methane emissions.
- ▶ **Global Warming**: is the part of Climate Change where Green House Gas emissions are trapping heat and warming our world.
- ▶ **Climate Change**: is the big picture view of how Green House Gases are causing our weather to change over a period of 20 to 30 years.

**JENI:** Read slide—So this is a picture of Napoleon’s throne. What different kinds of kings: Napoleon and God. Napoleon was iron-fisted and TOOK WHATEVER HE WANTED. God never intended for us to rule creation like that. Throughout the OT, God never wanted kings. There are many references to OT kings who were corrupt, wicked and cruel.





## Education: A menu of options

- ▶ What can you do to educate yourself and your congregation?
  - ▶ Baptist Creation Care Initiative: <https://baptistcci.org/>
  - ▶ For **all things on Climate Change** go to:  
<https://climate.nasa.gov/>
  - ▶ See **Oikonomos rationale and initiatives**:  
<https://woodlandbc.org/oikonomos/>
  - ▶ See **Oikonomos book resources** located on our website

**RAY:** Read heading and verse. Now we are skipping to the 2<sup>nd</sup> chapter of Genesis. In the KJV. It says “to dress it and keep it.” That sounds like lovingly caring for a young child. And like a child, it implies that the earth is fragile and needs care. We won’t bore you with a lot of Hebrew words in this seminar, but these 2 words are translated literally here...and this is an important part of God’s first assignment to humanity. Oh, it’s easy to be fruitful and multiply...we can do that without much effort. But in this assignment, to take care of creation and protect it, God has given us some work to do. In some of the very first words God speaks to humanity, God tells us to take care of ALL of God’s beloved, valued creation, that is entrusted to us!

## Oikonomos Actions in Education

- ▶ **Special Emphasis Training for Adults on God's Creation: Christian Scripture and Values**
  - ▶ Woodland Climate Change Sunday School classes:  
<https://woodlandbc.org/oikonomos-sunday-school/>
- ▶ **Special Emphasis Training for Adult, Youth and Children: Baptist Creation Care Initiative: <https://baptistcci.org/>**



RAY: So, a lot of Christians think that creation care is just a peripheral message in the Bible. Not that important. But as we go through this study, I think we'll see that holding that opinion means we haven't really been paying attention. We've been reading the Bible with pretty narrow blinders on. We've been looking for just the messages from God that we WANT to find, rather than hearing God's messages in scripture that tell us what's important to God...Judeo-Christian values...the information that tells us how to reflect God's image in our lives and in God's world.

## Start with an energy audit to educate yourselves and your members

- ▶ **Begin with an Energy Audit—Utility companies in some areas are a great resource**
  - ▶ DIY Home Energy Audit:  
<https://www.energy.gov/energysaver/do-it-yourself-home-energy-assessments>
  - ▶ Church/Business Energy Audit:  
<https://www.energy.gov/energysaver/professional-home-energy-assessments>
- ▶ **Turn off the lights signs**



RAY: Before we go further, let's address two theological misunderstandings. READ

# Woodland Energy Audit Summary

**Gross Annual Savings = \$10,976**

## **FAST FACTS:**

**Universal adoption of LEDs could prevent 7.8 gigatons of carbon emissions.**

**Older Buildings lose 35 percent heat or cooling through walls.**

Site Assessment Report: Woodland Baptist Church

## **Opportunity Summary**

Opportunity	Annual Energy Savings (kWh)	Demand Savings (kW)	Annual Cost Savings	Utility Rebate
1 Lighting Efficiency	15.06	49,831	\$5,481	\$7,155
2 Entrance & Exit Door Air Infiltration	1.69	2,520	\$277	\$413
3 HVAC Unit Replacements	4.53	8,904	\$979	\$2,032
4 Participate in High-Performance A/C Tune-Up Program	36.4	34,580	\$3,458	No Cost
5 Energy Star - Cool Roof Coating	2.08	7,108	\$781	\$618
<b>Total</b>	<b>59.76</b>	<b>102,943</b>	<b>\$10,976</b>	<b>\$10,218</b>

RAY: So these are the criteria we would expect to see if creation care is an important Biblical message. It's a consistent message of God throughout scripture, and it's clearly established as God's character, God's values, and what God loves. So, Let's take a look at scripture.

## Oikonomos Actions

- ▶ **Study renewable energy options and see what's available in your area**
- ▶ **Look for 3<sup>rd</sup> party assistance (rebates), *SolarHost Program*, awards and consultations** (city, county, state, energy provider)
- ▶ **Move to virtual meetings** when possible/walk or ride bicycles
- ▶ **Reconsider church office hours and staff working remotely**

JENI: We are reminded throughout the OT that everything and everyone in this world is God's. In Lev. Ch. 25, God is very specific that not only is the land his, but that we humans are responsible as God's tenants. READ We hold the land. We don't own it. And God says we must save it, redeem it.

## Oikonomos Actions

- ▶ **Recycle** anything possible (furniture, pews, etc.)
- ▶ **Discontinue** using non-recyclable products (Styrofoam, etc.)
- ▶ **Cities that recycle accept:**
  - ▶ Electronics
  - ▶ Cardboard & Paperboard
  - ▶ Paper
  - ▶ Passenger Tires limited numbers
  - ▶ Aluminum Cans
  - ▶ Tin/Steel Cans
  - ▶ Plastic bottles



JENI: We are reminded throughout the OT that everything and everyone in this world is God's. In Lev. Ch. 25, God is very specific that not only is the land his, but that we humans are responsible as God's tenants. READ We hold the land. We don't own it. And God says we must save it, redeem it.

## Oikonomos Actions

- ▶ **Considering permeable parking lot products** for new construction to retain water or ways to capture rain runoff



JENI: We are reminded throughout the OT that everything and everyone in this world is God's. In Lev. Ch. 25, God is very specific that not only is the land his, but that we humans are responsible as God's tenants. **READ** We hold the land. We don't own it. And God says we must save it, redeem it.

## Educate your community about what you're doing

- ▶ Marquee, banner, newsletter, newspaper
- ▶ Social media and websites
- ▶ Partner with other churches or groups with similar values
- ▶ City and county resources



**JENI:** In this passage (one chapter later), the people of Israel are about to enter the Promised Land. God gives them lots of commandments about how their relationship with the Almighty will work. This is a long passage, and for the purposes of this seminar, we have drawn together the statements about caring for the land.

**READ** Notice that God says that if we don't keep these commandments, God will "break your proud glory." It sounds like he's warning against getting on our "thrones" and acting like kings. Also, notice that the Sabbath laws also apply to rest of the land.



## Oikonomos Actions & Considerations

- ▶ Local botanist speak on incorporating indigenous plants into home and church landscapes
- ▶ Using indigenous plants to reduce the need for water
- ▶ Created a Monarch Butterfly Way Station
- ▶ Organic Gardening resources
- ▶ Looking to remove invasive plant species and plant trees (retain water and absorb carbon dioxide)



JENI: Lev. 25 introduced the word (not the concept) of tenants. So in the next chapter READ

## What's Next

- ▶ Replacing HVAC equipment with energy star products on a replacement schedule
- ▶ Solar Energy
- ▶ Considering rainwater retention system for lawns and gardens
- ▶ Advocacy



RAY: So what are the values of biblical stewardship that reflect God's image and apply to us today also? The first theme is Sustainable Land Use. The Sabbath laws applied to the soil, the trees, & domestic animals, as well as God's people. All must be allowed to rest and regenerate. The sabbath laws are to ensure the sustainable resources of Creation. The Talmud, which is rabbinic commentary on the Bible tells this story of a man named Honi: Honi saw a man planting a carob tree. He asked him, "How many years until it will bear fruit?" The man replied, "Not for 70 years." Honi asked, "Do you believe you will live another 70 years?" The man answered, "I found this world provided with carob trees that my ancestors planted for me. So I am planting these for my descendants." This story makes the point of long term sustainability.

## What's Next for Woodland? HVACs Needing Replacement

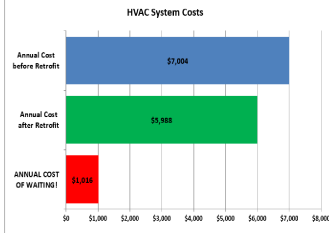
#	Model #	Serial #	MFD Date	Unit Age	Remaining EUL	Size	BTU	
14	HP24-463-1G	5192D07115	1992	29	-14	3.5	42,000	Replace
16	HP24-513-1G	5192G01130	1992	29	-14	4	48,000	
23	E1RA048S46A	WLJM018505	2000	21	-6	4	48,000	
26	E2FB090A46B	NMJM144845	2000	21	-6	7.5	90,000	
25	E1RD036S46B	W0K6944233	2006	15	0	3	36,000	Replace 1-2yrs
1	E1RD048S46B	W0F7942918	2007	14	1	4	48,000	
2	E1RD036S46B	V0G7831771	2007	14	1	3	36,000	
4	E1RD036S46B	W0G7031781	2007	14	1	3	36,000	
6	E1RD024SDGE	W0L7348745	2007	14	1	2	24,000	
7	E1RD048S46B	W0F7942916	2007	14	1	4	48,000	
24	E1RD036S46B	W0G7031780	2007	14	1	3	36,000	
13	38ARZ008--611--	3709G40118	2009	12	3	70	840,000	
21	E2FB090A46B	NHJM105653	2009	12	3	7.5	90,000	
12	24ABB360A620	2010E09651	2010	11	4	5	60,000	
20	PC120C00A4AAA2A	N1L0372634	2010	11	4	9	108,000	
15	25HBC348A600	1011E01977	2011	10	5	4	48,000	
17	UANL-049DAZ	7848W151200321	2012	9	6	4	48,000	
19	PC120C00A4AAA2A	N1H2084417	2012	9	6	9	108,000	
18	25HCD336A600	4614E06799	2014	7	8	3	36,000	

# Cost to Replace; Cost to Wait

## Energy Savings & Cost Analysis

NCP MW kWh Incentive  
4.929 9,618 \$ 2,206.06

Project Type	Removed Equipment				Installed Equipment										Minimum Efficiency Required						
	Manufacturer / Model #	Serial #	# of Units	Manufact Year	Manufacturer / Model #	AHRI Reference #	Cooling Capacity Rating	Units	Cooling Efficiency	SEER	# of Units	NCP MW	kWh	Incentive	Full-Load	Part-Load	Formet	Heating	Formet		
1	Replace or Remove	HP24-463-10	192207110	1	1982	CARRIER 29HC542A	9107400	42,000	Blah	13.00	16.00	EER	1	0.05	890	\$164.05	11.80	14.00	EER	8.20	HSPF
2	Replace or Remove	HP24-513-10	192207120	1	1982	CARRIER 19AH4821	20049100	48,000	Blah	13.00	16.00	EER	1	0.39	714	\$173.60	11.80	14.00	EER	8.20	HSPF
3	Early Retirement	E19C04546A	16LAW0000	1	2000	CARRIER 19AH4821	20049100	48,000	Blah	13.00	16.00	EER	1	0.39	714	\$173.60	11.80	14.00	EER	8.20	HSPF
4	Early Retirement	E19C04546B	MM4M4464	1	2000	CARRIER 29HC52 98	297038107	60,000	Blah	12.10	13.70	EER	1	0.78	150	\$95.05	11.30	12.80	EER	3.30	COP
5	Early Retirement	E19C04546B	W09M4420	1	2004	YORK 127F4821	20072910	36,000	Blah	13.00	17.00	EER	1	0.45	90	\$20.09	11.80	14.00	EER	8.20	HSPF
6	Early Retirement	E19C04546B	W0P74024	1	2007	CARRIER 19AH4821	20049100	48,000	Blah	13.00	16.00	EER	1	0.46	80	\$20.16	11.80	14.00	EER	8.20	HSPF
7	Early Retirement	E19C04546B	W0C91171	1	2007	YORK 127F4821	20072910	36,000	Blah	13.00	17.00	EER	1	0.45	91	\$20.19	11.80	14.00	EER	8.20	HSPF
8	Early Retirement	E19C04546B	W0C91178	1	2007	YORK 127F4821	20072910	36,000	Blah	13.00	17.00	EER	1	0.45	97	\$20.71	11.80	14.00	EER	8.20	HSPF
9	Early Retirement	E19C04546E	W0L74674	1	2007	YORK 127F4821	20072910	36,000	Blah	13.00	17.00	EER	1	0.30	411	\$105.04	11.80	14.00	EER	8.20	HSPF
10	Early Retirement	E19C04546B	W0P74024	1	2007	CARRIER 19AH4821	20049100	48,000	Blah	13.00	16.00	EER	1	0.46	80	\$20.16	11.80	14.00	EER	8.20	HSPF
11	Early Retirement	E19C04546B	W0C91178	1	2007	YORK 127F4821	20072910	36,000	Blah	13.00	17.00	EER	1	0.45	97	\$20.71	11.80	14.00	EER	8.20	HSPF

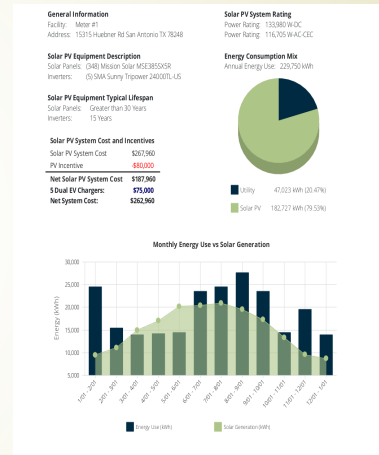


CLEARResult

We change the way people use energy

## What's Next: Solar Energy

- Secure utility usage from last year's bills
- Projection of Solar production; usually 75% of demand
- Cost savings per year
- Years to break even





## Create a spreadsheet of Bids

- ▶ Vendor
- ▶ Panels MFR
- ▶ # Panels
- ▶ System Size in KW
- ▶ Invertor—10 years
- ▶ EV Charger—recover costs
- ▶ Gross Cost
- ▶ CPS Rebate
- ▶ Net Cost
- ▶ Net Cost/KWH
- ▶ Payback Years 10-12 years
- ▶ Monthly Savings
- ▶ Est. Systems lost- 1/2%/yr
- ▶ Warranty Years—25 years  
maintenance costs?
- ▶ Parking Structure

## What's Next: Water Retention System





## Advocacy

- ▶ Let your city, county, state and national politicians and leaders know about your concerns about Climate Change







**Addressing Climate Change is the right thing to do and it may also grow your church membership**

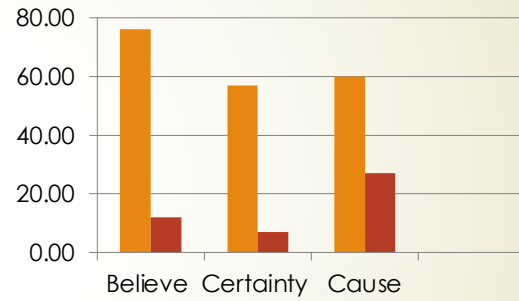


## Who cares about Climate Change?

- ▶ Yale researchers in September 2021 found:
  - ▶ 76 percent Americans think **global warming is real and happening** now
  - ▶ Only 12 percent are Dismissives

## Who cares about Climate Change?

- 60 percent Americans understand that global warming is mostly human-caused.
- 27 percent think it is due mostly to natural changes in the environment.





## Bringing in new members

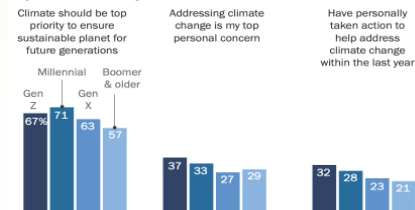
- ▶ Woodland is an aging congregations
- ▶ Attracting young adults with children
- ▶ Young adults are looking for the church to be relevant to the world
- ▶ Climate Change is a major concern for Millennial and Gen Z generations

## Climate Change is important to young generations

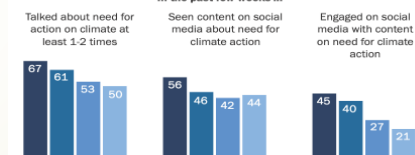
- **Gen Zers 32% and 28% of Millennials** took personal action on climate change last year
- **Two-thirds of Gen Zers, as well as 61% of Millennials,** talked with friends or family about the need for action

### Gen Z, Millennials more active than older generations addressing climate change on- and offline

% of U.S. adults who say ...



### In the past few weeks ...



Note: Respondents who gave other responses and who did not give an answer are not shown. Seen content on social media and engaged with climate content based on social media users.

Source: Survey conducted April 20-29, 2021.

"Gen Z, Millennials Stand Out for Climate Change Activism, Social Media Engagement With Issue"

PEW RESEARCH CENTER

JENI: The 3<sup>rd</sup> theme related to nature that we see reflected in the OT, which tells us about the values God expects us to hold is Respect for Flora & Fauna. READ slide

## Climate Change is important to young generations

### US adults want alternative energy

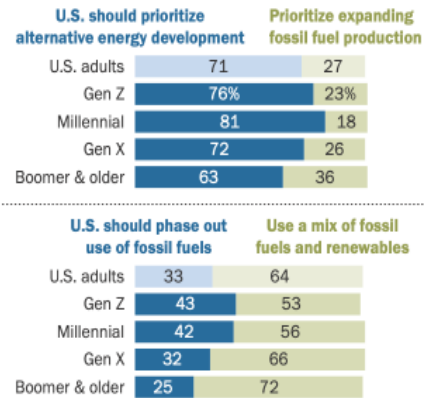
- 81 percent Millennial
- 76 percent Gen Z

### US should phase out fossil fuels

- 42 percent Millennial
- 43 percent Gen Z

### Younger generations more willing than older to give up fossil fuels, phase out gas-powered cars

% of U.S. adults who say ...

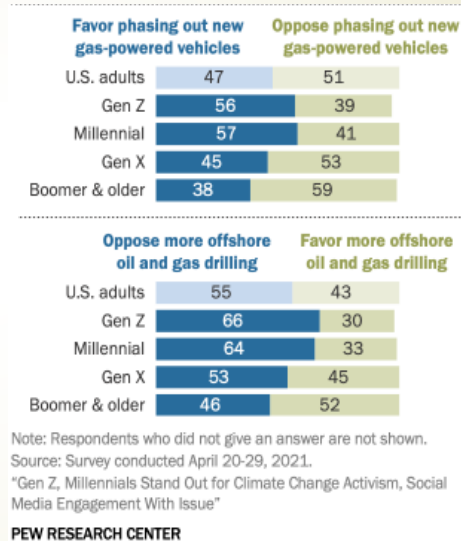


JENI: Finally, As you know, the Bible is full of commands about taking care of the poor and the vulnerable, like widows and orphans. Here are just a few examples in scripture. READ first bullet. Also, you find the same instructions in the rest of this list, and others.

## Climate Change is important to young generations

### Favor Phasing Out New Gas Vehicles

- 57 percent Millennial
- 56 percent Gen Z



JENI: The vulnerable include immigrants. God commands us to love them as we love ourselves, in fact. God commands us to be generous with the poor, and show hospitality, not just to our friends, but even to strangers.

READ verses

Of course, Jesus tells us to care for the poor, visit the sick, imprisoned...and how we should care for marginalized people.



## Climate Change is important to young generations

### ▶ Who's buying EVs in the US?

- ▶ 22% of Americans consider buying an electric vehicle (EV) for their next car-.
- ▶ 23% Americans considering a hybrid

YouGov Global Automotive Profiles 2021

JENI: So, here is a scientist who is explaining that he was wrong about something. That science is limited and needs assistance. Gus Speth is founder of the World Resource Institute and former Chair of the Council on Environmental Quality, as well as CEO of the UN Development Program. He says...





## Climate Change is important to young generations


- ▶ **Who's buying EVs in the US?**
  - ▶ **40 percent ages 18-34** intend to buy EV cars
  - ▶ **Over a quarter** of EV buyers are **ages 35-49**
  - ▶ **70%** say their **number one reason** to purchase an EV is **protecting the environment**.
- ▶ **By providing EV buyers a place to charge their cars, we believe it is a witness to people who may otherwise never drive into a church parking lot.**

JENI: So, here is a scientist who is explaining that he was wrong about something. That science is limited and needs assistance. Gus Speth is founder of the World Resource Institute and former Chair of the Council on Environmental Quality, as well as CEO of the UN Development Program. He says...



## **Addressing Climate Change**

- ▶ **Sound Christian theology**
- ▶ **Critical, existential moral issue**
- ▶ **Saves on excessive energy costs**
- ▶ **Addresses an issue that is especially important to younger and future generations**



## If you need help

- ▶ Text Ray Cook Furr at 757-846-0284 and I'll call you back.
- ▶ [AllCreation.org](http://AllCreation.org) Chris Searles
- ▶ <https://www.christianscaringforcreation.com/> Don Gordon